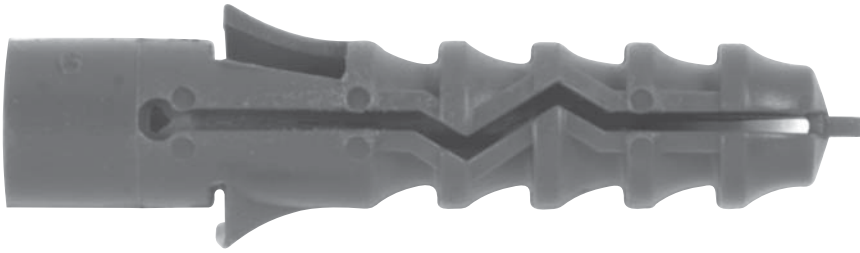


Light Weight Anchoring



Function

The RamPlug Anchor is a light duty, rotation setting interference fit anchor.

Features and Benefits

Fast and Easy to Install:

- Anchor simply hammered in.

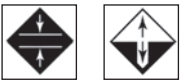
Convenient:

- Tags ensure anchor sits flush with substrate surface in over drilled holes.

Versatile:

- Anchor accepts many types of screws.

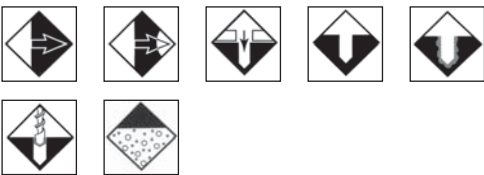
Performance Related



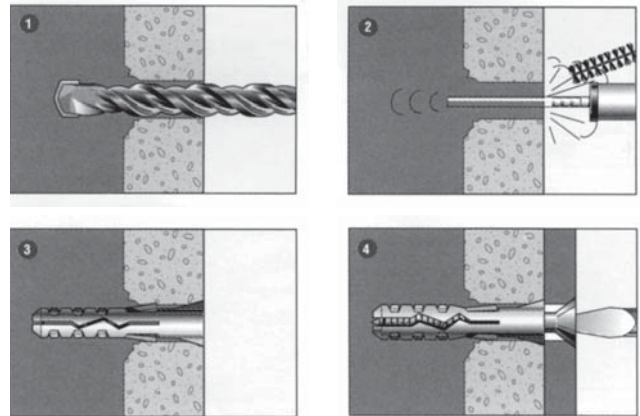
Material



Installation Related



Installation



1. Drill hole to correct diameter and depth.
2. Clean thoroughly with brush. Remove debris by way of vacuum or hand pump, compressed air etc.
3. Insert the RamPlug into hole until flush with the surface.
4. Pass wood screw through fixture and into the RamPlug. Tighten with screwdriver.

Note: (1) Screw length = length Ramplug + thickness of fixture.

Principal Applications into Brick and Block.

- Electrical Fittings

Light Weight Anchoring

These anchors are not recommended for structure critical applications and are typically used for simple fixing and finishing applications. Their capacity information is therefore presented in simple Working Load Limit format.

Installation and Working Load Limit Performance Details

Anchor	Anchor size, d_b (mm)	Installation details			Minimum dimensions			Reduced Characteristic Capacity		
		Drilled hole \varnothing , d_h (mm)	Fixture hole \varnothing , d_f (mm)	Anchor effective depth, h (mm)	Edge distance, e_c (mm)	Anchor spacing, a_c (mm)	Substrate thickness, b_m (mm)	Shear V_a (kN)	Tension N_a (kN)	
									Concrete strength MPa	
								20 MPa	20 MPa	40 MPa
DNP05	5	5	6	25	20	30	50	0.4	0.3	0.3
DNP06	6	6	7	30	24	36	55	0.8	0.5	0.5
DNP07	7	7	7	30	28	42	55	1.1	0.65	0.65
DNP08	8	8	8	40	32	48	65	1.3	0.8	0.8
DNP10	10	10	9	50	40	60	75	2.4	1.2	1.2

* For details on Working Load Limit and Reduced Characteristic capacities refer page 3.

Working Load Limit

Description and Part Numbers

Anchor size, d_b (mm)	Length, L (mm)	Part No.
		Standard
M5	25	DNP05
M6	30	DNP06
M7	35	DNP07
M8	40	DNP08
M10	50	DNP10