

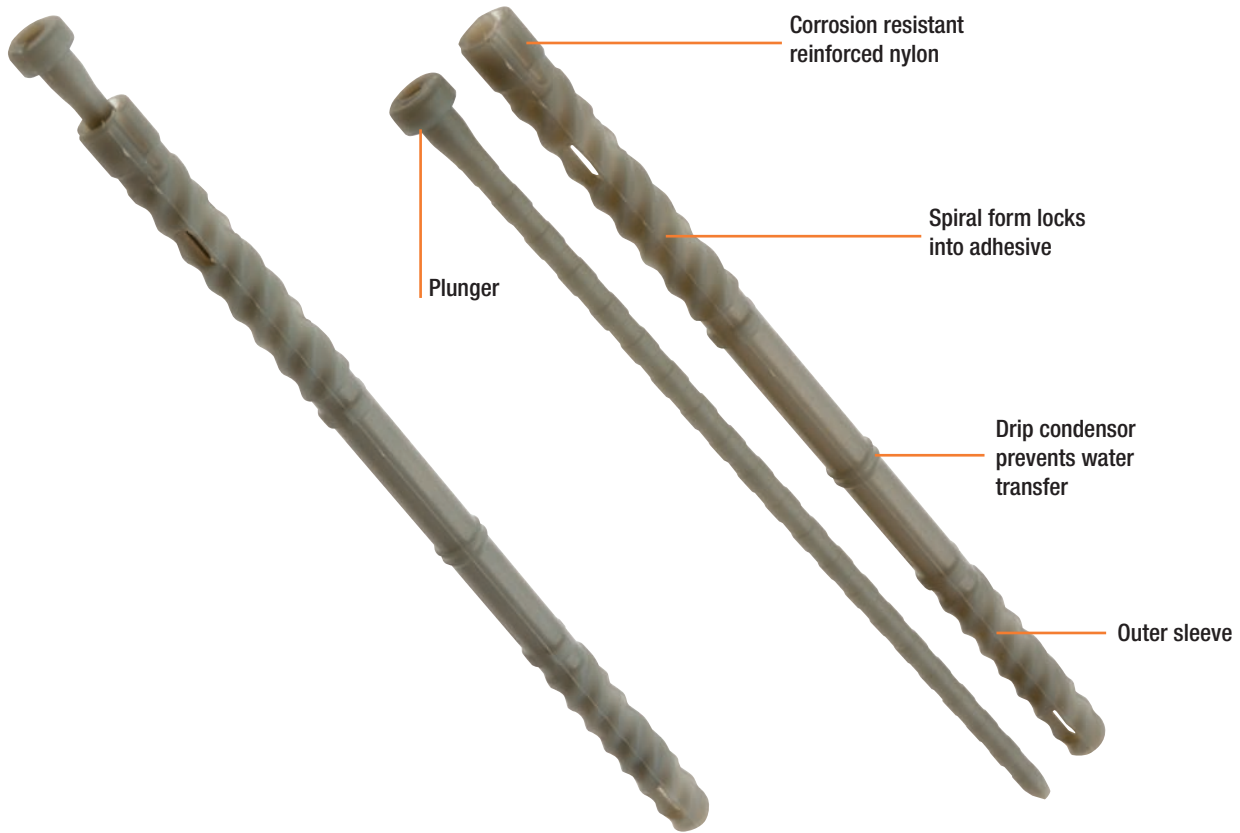
# Remedial Wall Ties

Medium Duty Anchoring



**Ramset™**

ChemSet™ Anchor Fixings



## Remedial Wall Ties

An innovative high strength, corrosion resistant nylon solution to replacing corroded brick ties. Fast and easy to install.

## Typical Properties

Property	Typical Value
Overall Length	220.0 mm
Nominal Diameter	12 mm
Material	Glass Filled Nylon
Service Temperature	-5°C to 40°C
Yield Strength Tension ASTM D638	170 MPa
Substrates	Solid Brick, Solid Concrete

## Quantity of Wall Ties Per ChemSet™ 101 Pack

Pack Size	Quantity Of Wall Ties
380ml	48
750ml	98

## Trades & Applications

	Brick Layer
Replacing Brick Ties	✓



## Features and Benefits

- High strength, corrosion resistant glass reinforced nylon
- No expansion stress on bricks
- Non-destructive installation
- Easy, simple and quick to install
- Install from either side of the wall
- No setting tool required
- Fast setting time (in conjunction with ChemSet™ 101 and Ultrafix™ Plus)
- Recessed for neat finish
- Designed to prevent water transfer between cavities
- Suitable for installation in damp conditions (with ChemSet™ 101 and Ultrafix™ Plus)

## Related Products

DynaDrill™  
Carbide Drill Bits  
Diamond Motor

Diamond Core Drill Bits  
Hole Cleaning Brushes  
Hole Cleaning Pump

### Installation

1. Drill a 12 mm diameter hole in solid brick using a masonry drill bit all the way through the nearest brick and maximum 70 mm into the second brick

2. Brush and blow dust out of holes

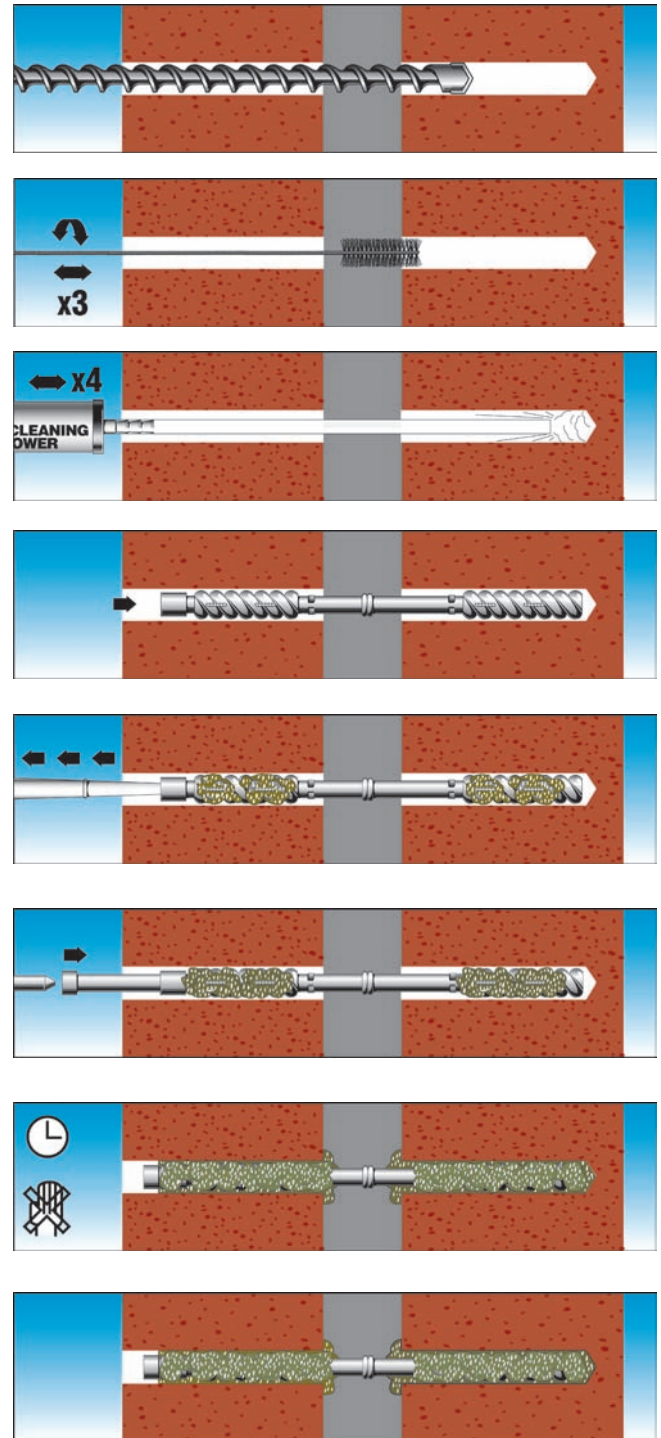
3. Insert outer sleeve through first brick into the second until it reaches the back of the hole

4. Insert ChemSet 101 or Ultrafix™ Plus mixing nozzle into outer sleeve and dispense adhesive until sleeve is full

5. Insert the wall tie plunger into the outer sleeve all the way in

6. Adhesive will cure and hold the two brick leaves together

Refer to Technical Data Sheet and MSDS available from [www.ramset.com.au](http://www.ramset.com.au), for precautions and further detailed installation instructions



### Characteristic Loads in Red Clay Brick at 1.5 mm deflection with ChemSet™ 101

	Characteristic Load
Tension	0.87 kN
Compression	2.05 kN

### Remedial Wall Ties

Description	Part No	Box Quantity
Remedial Wall Tie	RA225	100